

# SYP Overview and Scrutiny Performance Report

## First Six Months of 2012-13

### PERFORMANCE REPORT ON COMMUNITY SAFETY PLAN 2011-14

#### 1. Introduction and Overview

1.1. Data and/or update information on progress is not held by the Safer York Partnership support team for all of the indicators contained within the plan.

1.2. Work has been disrupted due to flooding of Clifford Street and lack of a permanent office.

1.3. This report will now take the form of an exception report whereby only items which are underperforming are reported upon. The exception report will be presented in a form in line with the Community Safety Plan 2011-14 which has the following priorities;

- Acquisitive Crime
- Anti-Social Behaviour
- Violent Crime
- Business Crime
- Re-offending Information
- Other Indicators

#### York - All Crime (from IQANTA)

##### Totals

###### Target 2013-14

13756

###### Forecast 2012-13

12398

###### Cumulative

7232

###### Target Monthly Total

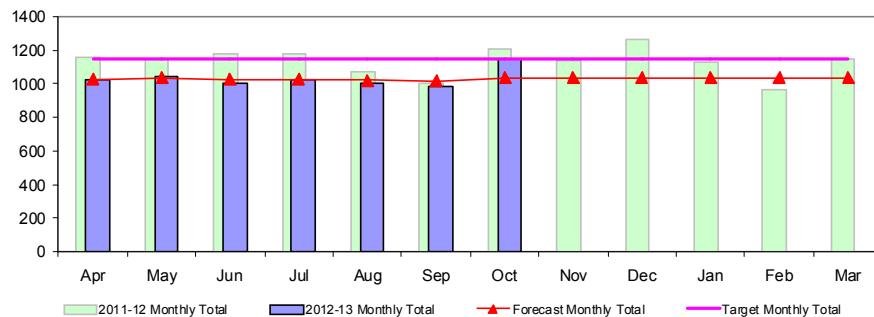
1146.3

###### Previous Years

2007-08	18924
2008-09	17886
2009-10	14480
2010-11	15199
2011-12	13576

###### Milestone Targets

2012-13	13937
2013-14	13756



##### The Graph shows:

- 1) Target level 2013-2014 (Strategy end n of the Yearly milestones)
- 2) Forecasted annual total based upon a moving average of months (There has been no allowance for known seasonal patterns)

##### Key:

- Action Needed (>120%)
- Caution (100% - 120%)
- No Action (<100%)



Month	2012-13	2011-12	2010-11	2009-10
Apr	1026	1157	1264	NA
May	1042	1151	1370	NA
Jun	1007	1177	1323	NA
Jul	1020	1177	1269	NA
Aug	1006	1069	1331	NA
Sep	983	1001	1320	NA
Oct	1148	1205	1346	NA
Nov		1138	1320	NA
Dec		1261	923	NA
Jan		1129	1171	1008
Feb		966	1207	1066
Mar		1145	1355	1084

1.4. Total crime in York dropped by 10% (1623 crimes) in 2011-12 compared to 2010-11. The first seven months of data available from Iquanta suggest that crime continues to reduce and at present is predicted to be between 5 and 10%.

1.5. York's Joint Strategic Intelligence Assessment has been completed. This has identified four themes that will make up part of North Yorkshire Police's control strategy:

- Serious Acquisitive Crime
- Protecting Vulnerable People
- Quality of Life
- Organised Crime Groups

1.6. York has moved from 12th place to 11th place within its Iquanta family comparison of most similar family members. In order to move another place, York would have to further reduce crime by 2%

1.7. The only crime performance targets, where there was not a reduction in crime within the last strategy were; NI 20 Assault without Injury, NI 29 Gun crime and Aggravated Vehicle Taking which saw rises of 172 crimes (17%), 5 crimes (250%) and 1 crime (7%) respectively.

**2. Acquisitive Crime**

**York - NI 16 - Serious Acquisitive Crime**

**Totals**

**Target 2013-14**

1798

**Forecast 2012-13**

1493

**Cumulative**

871

**Target Monthly Total**

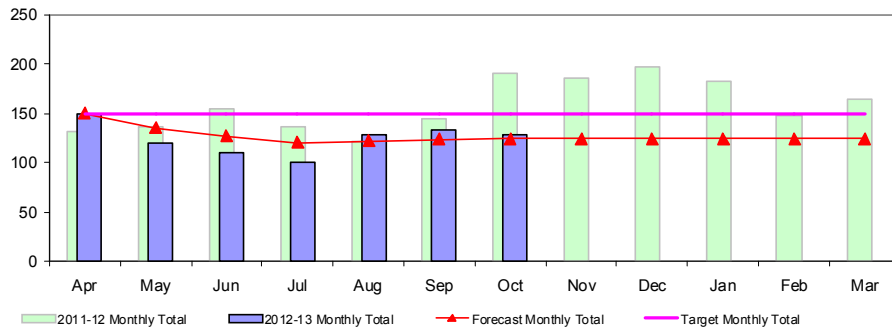
149.8

**Previous Years**

2007-08	3330
2008-09	3459
2009-10	1998
2010-11	2067
2011-12	1895

**Milestone Targets**

2012-13	1848
2013-14	1798



**The Graph shows:**

- 1) Target level 2013-2014 (Strategy end not the Yearly milestones)
- 2) Forecasted annual total based upon a moving average of months (There has been no allowance for known seasonal patterns)

**Key:**

- Action Needed (>120%)
- Caution (100% - 120%)
- No Action (<100%)



Month	2012-13	2011-12	2010-11	2009-10
Apr	150	131	159	202
May	120	137	217	138
Jun	110	155	166	124
Jul	101	137	167	138
Aug	128	122	159	207
Sep	134	144	175	207
Oct	128	191	147	224
Nov		186	157	188
Dec		197	138	160
Jan		182	167	124
Feb		148	193	145
Mar		165	222	141

2.1. Acquisitive crime in 2011-12 was 8% lower (170 crimes) than the previous financial year and based upon seven months data in 2013-14 this reduction is predicted to continue, with a possible further 20% drop in acquisitive crime.

2.2. York has seen significant improvement in its position within its Iquanta family with York now sitting in 7th place compared to 12th place at the start of the financial year.

2.3. Not all areas of York are predicted to have a 20% drop in acquisitive crime. Wards which are not predicted to have these reductions, and the volume of crime is enough to show significant change are as follows:

- Clifton ward, where there is a predicted 30% increase due to higher levels of auto-crime.
- Haxby & Wigginton ward, where there is a predicted 26% increase due to higher levels of burglary
- Heworth ward where there is a predicted 35% increase due to higher levels of burglary.
- Hull Road ward, where there is a predicted 11% increase due to higher levels of burglary.
- Huntington & New Earswick ward, where there is a predicted 24% increase due to higher levels of auto-crime.
- Skelton, Rawcliffe & Clifton Without ward, where there is a predicted 56% increase due to higher levels of both burglary and auto-crime.

2.4. The following changes have been made when comparing 2011-12 to 2010-11.

- Domestic Burglary - 12% Decrease - 96 Crimes
- Non-Domestic Burglary - 7% Decrease - 97 Crimes
- Theft from a Motor Vehicle - 3% Increase - 26 Crimes
- Theft of a Motor Vehicle - 30% Decrease - 80 Crimes
- Robbery of Personal Property - 17% Decrease - 16 Crimes

	2012												
	Jan	Feb	Mar	Apr	May	Jun	Jul	Aug	Sep	Oct	Nov	Dec	Running Total
Allotment					1	2	3			1			7
Business Premise / Commercial				13	21	14	18	13	22	18			119
Dwelling				46	55	31	31	38	35	39			275
Education				2	1	3			3	3			12
Garage				36	27	23	29	27	27	26			195
Shed / Outbuilding				38	35	28	17	14	18	34			184
Unknown				1		1	1	1					4
Grand Total				136	140	102	99	93	105	121			796

2.5. Within the last seven months there have been approximately 195 burglaries of garages within York, at approximately 30 a month. These account for 28% of all burglaries in York as they can be recorded as a domestic or non-domestic burglary depending on if the garage is integral to the house or external.

2.6. The level of burglaries of sheds / out-buildings has risen in October, after low levels during the summer.

2.7. A study of burglary of garages has shown that;

- 30% of these garages are insecure
- 30% of these garages are entered by bending back the main door
- 15% of these garages are entered through breaking or removing a window
- 15% of these garages are entered by forcing the back door
- 10% of these garages are entered by other means such as having a key, using an external door, removing bricks or coming through the roof.

2.8. There is no single type of property that has been targeted in theft from vehicle. Vehicles continue to be targeted for property left on show. Levels of number plate theft / catalytic converter theft continue to be analysed and these remain low, between 2 and 4 cases per month on average.

Burglary 2012													
	Jan	Feb	Mar	Apr	May	Jun	Jul	Aug	Sep	Oct	Nov	Dec	Running Total
Clifton Moor Business & Retail Park	0	0	0	1	2	0	0	0	0	0			3
Monks Cross	1	0	0	0	0	0	0	0	0	0			1
Murton Industrial Estate	0	0	0	0	0	0	0	0	0	0			0
Poppleton Business Park	0	1	0	0	0	0	0	0	0	0			1
Outgang lane Industrial Estate	0	0	0	1	0	0	0	1	0	0			2
Derwent Valley Ind Estate	0	0	0	0	0	0	0	0	0	0			0

Autocrime 2012													
	Jan	Feb	Mar	Apr	May	Jun	Jul	Aug	Sep	Oct	Nov	Dec	Running Total
Clifton Moor Business & Retail Park	1	2	1	1	3	2	0	1	2	4			17
Monks Cross	2	0	0	1	1	1	0	3	3	0			11
Murton Industrial Estate	0	0	0	1	1	0	0	1	0	0			3
Outgang lane Industrial Estate	0	1	3	0	0	0	0	0	0	1			5
Poppleton Business Park	0	2	4	0	1	0	0	0	0	1			8
Shipton Park	0	0	0	0	0	0	0	0	1	0			1

2.9. Levels of all types of acquisitive crime at the following continue to be low and under target;

- Business premises and industrial estates;
- Schools and six form colleges;
- City-centre cycle racks;
- Allotments;
- Hotels;
- York St Johns;

2.10. Levels of all types of acquisitive crime at the following continue to be low although there has been more crime than expected in September and October

- Council car parks;
- University

- o York District Hospital.

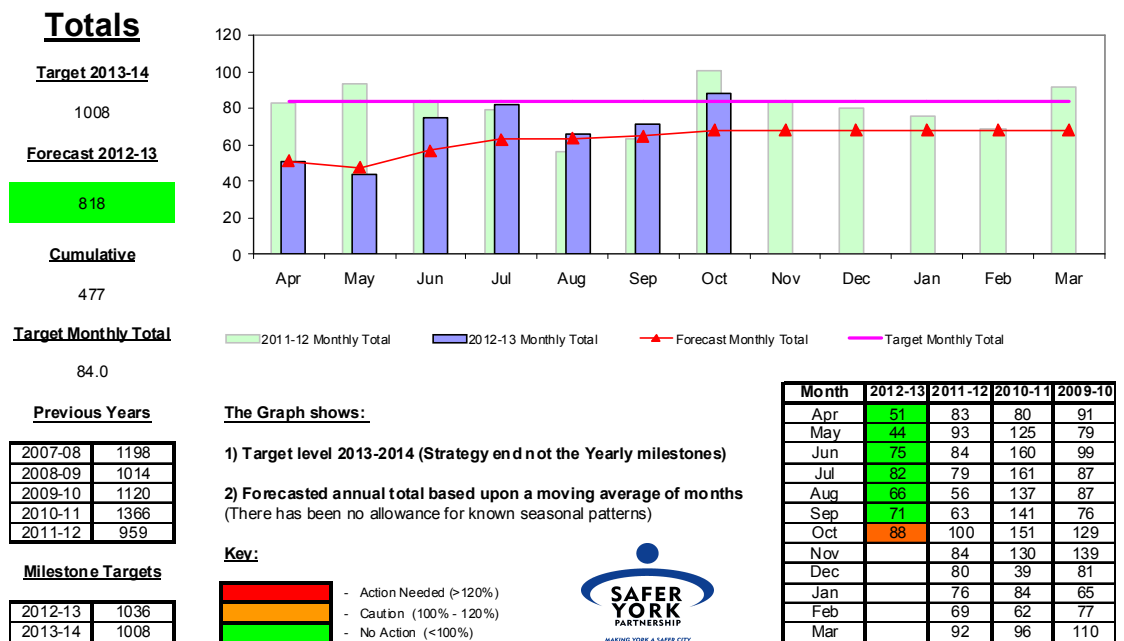
2.11. We have been working with the NYP Operational Plan Owner for Operation Bucaroo (reduction of auto-crime) to develop the preventative strategy of this operation.

2.12. Worked with the suppliers of the Garage Guardian security device to develop a medium security version which we feel will improve take-up given the reduced price of £30 as opposed to £85. This also makes it cost effective for it is provided as part of the Safer Homes Handyperson service for victims. We are keen to encourage take-up given the rise in garage breaks over the past 12 months.

2.13. Given our move to Derwent School, we are no longer able to store security equipment. We have now arranged for the Home Improvement Agency (Yorkshire Housing) to sell equipment on our behalf in York.

2.14. We now have 209 Cold Calling Control Zones in the city, covering 255 streets and 8189 properties. There have been 7 distraction burglaries in 2011-12 and 4 in the first half of 2012-13. The main types of MO for this crime were criminals pretending to be from the council or water board with 2 crimes each. City of York council is receiving around 10 submissions a month for cold-calling control zones.

### York - Theft or unauthorised taking of a cycle



2.15. Levels of cycle theft continue to reduce with 407 crimes fewer of theft of cycles in 2011-12 equating to a 30% drop since 2010-11. Cycle theft levels in the first eight months of the year continuing to suggest further drops, 14%, in this crime type.

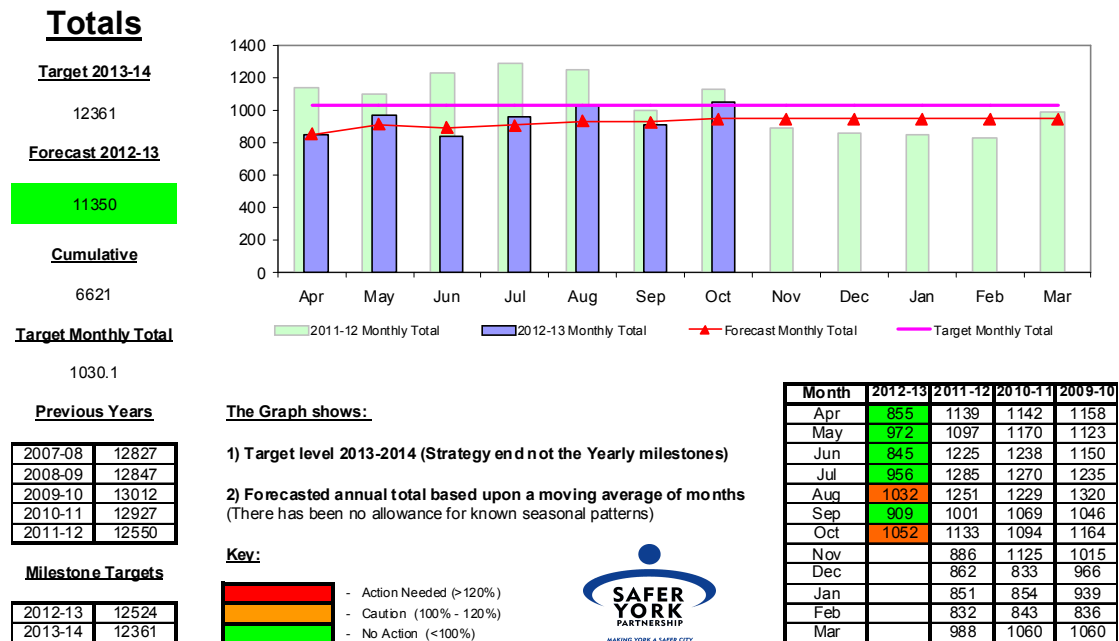
2.16. 14500 Bikes have now been registered within the Operation Spoke project since January 2010. These bikes were registered at a rate of around 10 bikes a day since the start of 2011.

	Nov08-Jan09	Jul09-Sep09	Apr10-Jun10	Jul10-Sep10	Oct10-Dec10	Jan11-Mar11	Apr11-Jun11	Jul11-Sep11	Oct11-Dec11	Jan12-Mar12	Apr12-Jun12	May12-Jul12	Jun12-Aug12	Jul12-Sep12
York	1.41	1.43	1.87	2.24	1.55	1.21	1.30	0.98	1.27	1.14	1.03	1.18	1.11	1.09
Cambridge	4.30	5.42	6.72	7.04	6.13	3.67	5.04	4.36	4.29	2.98	3.02	4.34	4.98	5.10
Oxford	2.56	3.52	3.67	3.93	3.30	2.77	5.32	4.87	4.25	3.75	3.53	3.85	3.66	4.00
Brighton			1.09	1.34	0.75	0.75	1.21	1.02	0.92	0.69	0.74	1.01	1.27	1.47
Bristol			1.21	1.54	0.96	0.99	1.15	1.37	1.17	0.95	0.90	1.07	1.12	1.20
Exeter			0.95	0.94	0.92	0.53	0.72	0.86	0.94	0.78	0.61	0.85	0.95	1.05
Lincoln			1.28	2.43	1.31	1.36	2.41	2.29	2.05	1.59	1.54	1.85	1.86	2.40
Manchester			1.40	1.44	1.15	0.89	1.29	1.64	1.10	0.85	0.85	0.95	0.99	1.12

2.17. York continues to perform well on cycle crime levels, compared to other cycling cities, with the York performing significantly better than similar cities of Oxford and Cambridge.

### 3. Anti-Social Behaviour

#### York - NYP Recorded ASB Calls for Service

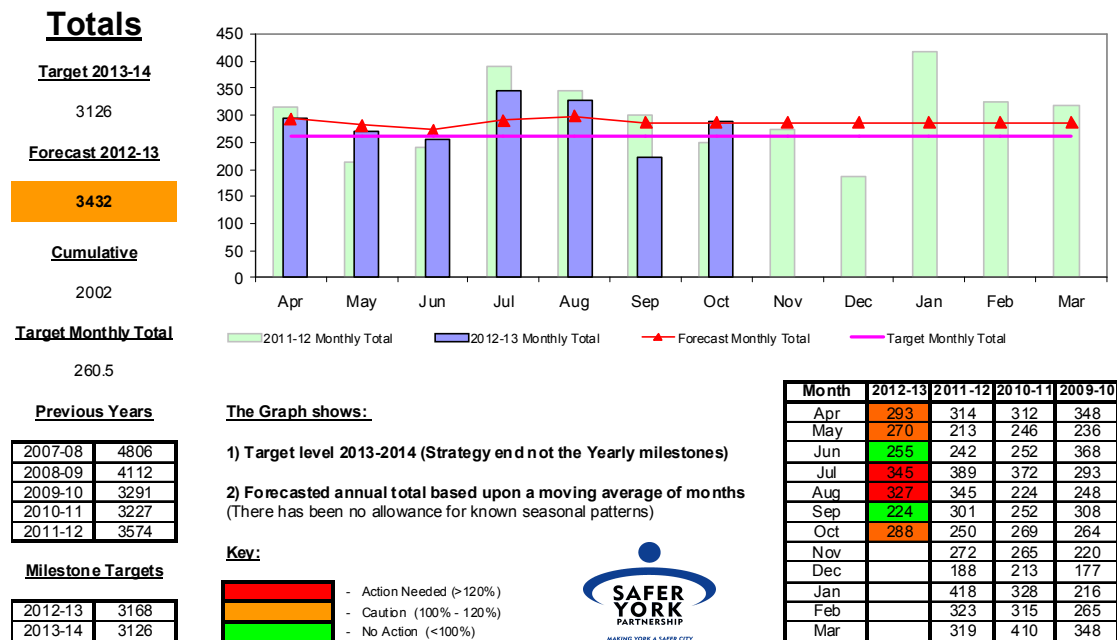


3.1. Levels of anti-social behaviour calls for service recorded by North Yorkshire Police were slightly lower, 400 cases (2%) at the end of the financial year. Levels in the first seven months of 2012-13 continue to reduce.

3.2. The level of criminal damage in 2011/12 was 16% (407 cases) lower than last year. All types of criminal damage fell. Based on the first six months of 2012-13 this drop in criminal damage is predicted to continue and is likely to be in the region of 8%.

3.3. York currently sits in 7<sup>th</sup> position in its Iquanta family compared to 8<sup>th</sup> place at the end of the summer 2011, and has improved its position from 15<sup>th</sup> since January 2011.

### York - CYC Recorded ASB Calls for Service



3.4. Overall levels of council recorded anti-social behaviour rose by around 320 cases (8%) higher in 2011-12. These are due to rises within fly-tipping, litter and to a lesser extent graffiti and drugs related litter. Applications such as the SmarterYork mobile application have added to the increases in fly-tipping and rubbish as this has become easier to report.

3.5. The first seven months of 2012-13 indicate that levels of council recorded ASB are likely to reduce by around 10% from last years total.

Anti-Social Behaviour Type	Predicted Change 2012-13 to 2011-12
All NYP Asb	-4%
<i>Environmental</i>	-24%
<i>Nuisance</i>	-2%
<i>Personal</i>	-4%
All CYC Asb	-10%
<i>Abandoned Cars</i>	89%
<i>Drug Related Litter</i>	-33%
<i>Flytipping - Rubbish</i>	7%
<i>Grffiti</i>	-12%
<i>Litter</i>	-19%
<i>Dog Fouling</i>	-36%
NYP Criminal Damage	-12%
EPU Noise Cases	-2%
CYC Housing ASB complaints Open	12%
CYC Housing ASB Complaints Closed	-40%

3.6. The level of graffiti recorded on TAAGY, the multi-agency system for logging graffiti, has been between 25 and 30 cases for the last three

months The SmarterYork application has now been dynamically integrated to the TAAGY system.

- 3.7. Information held on graffiti by TAAGY suggests that areas of Micklegate, Holgate and Acomb continue to be the main wards affected by graffiti in York.
- 3.8. For the six months between January and June the council obtained 44 orders against individuals, ranging from breach of injunctions, orders for possession to premises closure orders.
- 3.9. We are looking to amalgamate the myriad of meetings to tackle ASB such as Nuisance Action Group, and ASB Referral Panel for example into one meeting to be called Multi Agency Problem Solving, we are currently finishing work on the database which will allow us to streamline our processes and reduce the bureaucracy involved. These new meetings should start in February.
- 3.10. The number of mediation cases has increased for the first half of the financial year from 19 to 28, which is a 47% increase. Because of these increases and future projects we have trained an additional 8 mediators within the York area to ensure that we are still able to deliver a consistent high quality service.
- 3.11. Freshers week figures from EPU show that for the 8 additional days Monday to Thursday (Friday and Saturdays are already covered) for both Universities EPU received 46 calls and they visited 14 properties. SYP have funded this additional service for this financial year.

#### **4. Violent Crime**

- 4.1. Levels of violent crimes in York were 388 crimes lower in 2011-12 than last year, equating to a 14% reduction. This reduction has continued in to 2012-13 with at this stage after 7 months data a predicted 9% further drop
- 4.2. York is currently in 9<sup>th</sup> place within its IQUANTA family for violent crime, this is an improvement from 12<sup>th</sup> place at the start of 2011.
- 4.3. Levels of violence and damage crime within York's Cumulative Impact Area (City Centre) and the city centre continue to gradually reduce.
- 4.4. Work has been completed to establish an evidence base in order to understand if York has a need for a late-night levy. Evidence suggests that:
  - 246 Premises have licenses which finish between 00:00 and 06:00 as well as a 24hr licenses
  - In the last 12 months of available data, only 34 premises (14%) have violent crime within a 25m Radius of the premise



- 4 wards in the city have licensed premises with violent crime within a 25m Radius. (Guildhall, Micklegate, Rural West, Westfield)
  - In the last 12 months of available data 66 premises (27%) have any type of crime within a 25m Radius
  - In the last 12 months of available data 54 premises (22%) have ASB within a 25m Radius
- 4.5. The Night-safe steering group will be replaced with the AVANTE task group (Alcohol Violence and the Night Time Economy). Work is currently ongoing to develop the remit and terms of reference for this group.
- 4.6. We held a meeting with the A&E Consultant working with us on the A&E data sharing project to discuss potential uses of the data. This work will be developed through the new AVANTE (Alcohol, Violence and the Night Time Economy) task group meeting.
- 4.7. The DPPO consultation for York which started on the 10<sup>th</sup> October has now finished. A report is being written at present on the responses.
- 4.8. Information from Accident and emergency suggest that since December 2012:
- There on average 60 attendances a month for victims of assault. The attendance times for day of the week and hour of the day match police records with peaks being in the early hours of Saturday and Sunday mornings.
  - At least 35% of these and possibly up to 80% are where alcohol on behalf of either the victim or offender has been a factor
  - At least 15% of these and possibly up to 55% are where a weapon has been used
  - Between 15% and 30% of these attendances happened after the assault had taken place within the “home”, which could be an indication of domestic violence levels.
- 4.9. There is no new domestic incident data since August 2012. On the 25<sup>th</sup> of November three new crimes of stalking came in to effect:
- 8L/08/65 Stalking involving fear of violence
  - 8L/08/66 Stalking involving serious alarm/distress
  - 8L/195/12 Pursue course of conduct in breach of Sec 1(1) which amounts to stalking
- 4.10. There is no new information at the time of writing of this board report. This has just been a time issue, to organise and structure the data.

4.11. There were 30 Multi-Agency Risk Assessment Conferences (MARAC's) held for domestic violence held during the first four months of 2012/13. The percentage of repeat Marac's is at similar levels to the last two years.

Month	Total MARAC's	Initial	Repeat	% Repeats
2007-08	36	33	3	8.3
2008-09	83	74	9	10.8
2009-10	91	75	16	17.6
2010-11	148	121	27	18.2
2011-12	162	131	31	19.1
2012-13 to Date	30	19	11	36.7
2012-13 Precited	120	52	44	36.7

4.12. The total number of Marac's held in York in 2011/12 rose for the fourth year in a row since their inception. At this stage, although it is predicted that there will be fewer Marac's in 2012/13, this does not take in to account that historically the months of November, December and January have the most MARAC's.

Indicator	Type	2007/08	2008/09	2009/10	2010/11	2011/12
NI 34 Domestic Violence Murder	Target	N/a	0	0	0	0
	Out-turn		0	0	0	0

4.13. No domestic violence murders were recorded during 2011/12 or the first six months of 2012-13 in York.

4.14. Comments from all agencies have been coordinated for the Commissioning Strategy task and finish group since the last meeting and executive summary produced.

4.15. A MARAC option report developed

4.16. A Hidden Crime event has been held on Stalking.

4.17. Agreed programmes decided for young people that Harm – IDAS awarded a three year contract via Respect to work with young people that have been affected by domestic abuse and are showing violent behaviour towards family and siblings. An agreement from CYC, NYCC and SYP and NYP to fill the gap for 14 -19. Funding has been agreed and a plan of which professionals / agencies will be invited for the 6 day training.

4.18. Making Safe – Agreed via the Local Making Safe group a two day scoping exercise undertaken by Respect to look at an Adult programme to enhance the Making Safe package. Respect will scope the Victim service and the Offender Service.

4.19. Communication Strategy Agreed for next quarter (County and Local)

**5. Re-offending information**

5.1. Data on proven re-offending by young offenders is now available for the completed 2011/12 year and the 1st quarter of 2012/13. The level of re-offending has been higher than target in 2011/12. Information taken from the integrated commissioning document suggest:

*“Provisional result. York historically very high compared with statistical family and region. Cohort analysis shows fundamental changes in risk profile. Improving FTE (PI 111) figures have resulted in taking out the lower risk young people from the re-offending (PI 19) cohort. York compare more favourably with national measures looking at larger 12-month rolling cohorts.”*

Indicator	Type	2007/08	2008/09	2009/10	2010/11	2011-12
NI 19 Rate of Proven re-offending by young Offenders aged 10 to 17	Target	1.91 (2005)	1.82	1.74	1.66	1.88
	Out-turn		1.62	1.17	2.00	2.2

Indicator	Type	2012-13			
		Q1	Q2 +	Q3 +	Q4 +
NI 19 Rate of Proven re-offending by young Offenders aged 10 to 17	Target	0.65	1.24	1.69	2.06
	Out-turn	0.67	Avail End Jan		

5.2. Data on first time entrants in to the youth justice system is now available for the completed 2011/12 year, and quarter 2 of 2012/13. This data suggests that the number of first time entrants continues to decline in York year on year. Information taken from the integrated commissioning document suggest:

*“Provisional result, cumulative figure. Data quality problems with police system persist. Numbers of reprimands had reduced dramatically over recent years but seem to plateauing. 2012/13 performance does shows a drop in numbers compared to 2011/12. NI 111 performance continues to have a perverse impact on re-offending (PI 19).”*

Indicator	Type	2007/08	2008/09	2009/10	2010/11	2011/12
N 111 First time entrants to the Youth justice System aged 10 to 17	Target	2350	2185	2040	1900	928
	Out-turn		1810	1559	846	776

Indicator	Type	2012-13			
		Q1	Q2 +	Q3 +	Q4 +
NI 111 First time entrants to the Youth justice System aged 10 to 17	Target	191	382	573	763
	Out-turn	76	204		

## 6. Business Crime

6.1. Levels of most types of business crime are comparable to last year except shoplifting where it is predicted there will be a 2% of shoplifting.

WARD NAME	2012												2012 Total
	Jan	Feb	Mar	Apr	May	Jun	Jul	Aug	Sep	Oct	Nov	Dec	
Acomb	1	0	2	4	1	2	3	5	4	7			29
Bishopthorpe	0	0	1	0	0	0	1	0	0	0			2
Clifton	8	3	4	7	9	1	5	5	7	5			54
Derwent	0	0	0	0	0	0	0	0	0	0			0
Dringhouses & Woodthorpe	7	0	7	10	10	11	8	11	5	11			80
Fishergate	7	3	7	6	5	6	4	2	12	8			60
Fulford	2	3	5	1	5	1	4	9	2	0			32
Guildhall	48	57	67	69	47	39	60	46	49	52			534
Haxby & Wigginton	2	0	1	0	1	2	0	2	0	2			10
Heslington	0	0	0	0	0	0	0	0	0	0			0
Heworth	16	4	11	13	8	25	12	7	8	17			121
Heworth Without	0	0	2	0	0	0	0	0	0	1			3
Holgate	1	0	1	1	1	1	0	5	0	5			15
Hull Road	3	3	3	6	1	4	6	1	11	3			41
Huntington & New Earswick	14	7	5	11	6	10	8	8	11	3			83
Micklegate	3	3	6	4	5	3	8	10	5	6			53
Osbaldwick	1	2	7	2	0	3	0	1	1	5			22
Rural West	1	1	3	1	1	4	3	0	2	2			18
Skelton, Rawcliffe & Clifton Without	13	2	1	7	5	2	6	2	7	2			47
Strensall	3	1	0	0	0	0	0	0	0	1			5
Westfield	5	5	5	6	7	8	6	11	2	8			63
Wheldrake	0	0	1	0	0	0	0	0	0	0			1
Grand Total	135	94	139	148	112	122	134	125	126	138	0	0	1273

6.2. After 7 months of 2012/13 there have been 25 less premises shoplifted from compared to this stage last year, indicating higher repeat victimisation of the larger premises.

6.3. Smaller supermarkets continue to account for 10 of the top 20 premises suffering the highest volumes of shoplifting. The majority of this shoplifting is of alcohol and steps have been taken through the SNT's, business crime task group and by NYP licensing to address these issues

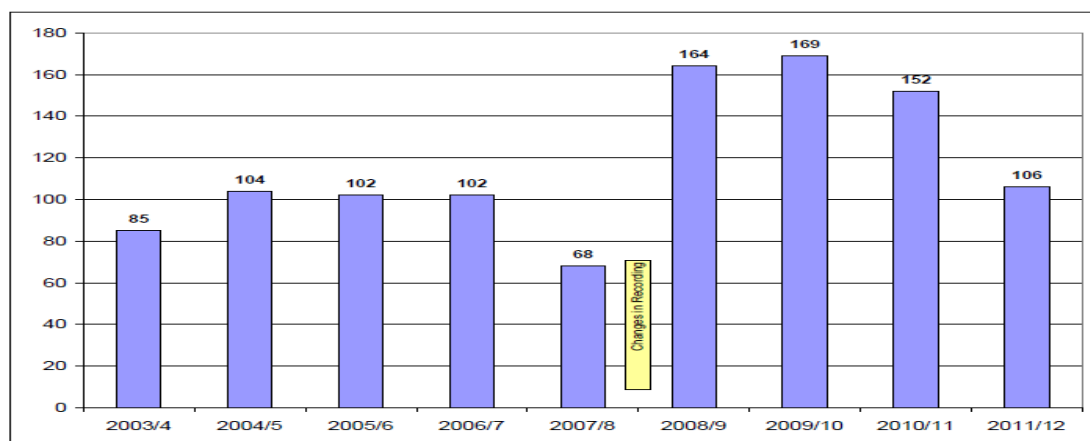
6.4. The majority of shoplifting is within the city centre areas of York. There have been a higher number of cases than expected at Mearthurglen within the last few months, although numbers are still low. Levels of shoplifting at Monks Cross, Clifton Moor, and Front Street in Acomb continue to be low.

6.5. The levels of arrests for shoplifting are in the region of 100 arrests a month. The number of people whose disposal is Youth Restorative Justice or Community Resolution has increased in 2011 as the number of people with full charges has dropped.

6.6. Clifton Moor against Business Crime (CMAC) was officially launched on the 1st October. CMAC is a new retailer's against crime scheme. A new radio security system has been launched provided by APEX radio system which has also been extended to the security team at the Monks Cross Retail Park. The radio link between the retail parks will be useful in combating travelling gangs who often hit both sites due to their proximity on the ring-road. This scheme was deliberately launched at this time to coincide with the busy Christmas period.

6.7. Working with the NYP Operational Plan Owner to develop the preventative strategy for a new retail crime operation, Operation Charisma.

## 7. Other Information

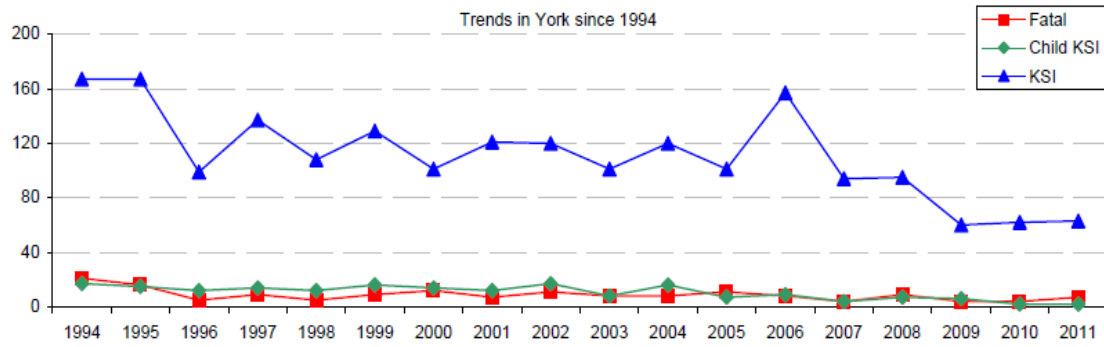


7.1. Levels of hate crimes / incidents have dropped in 2011/12 with 46 fewer cases. There have only been 31 reported hate crimes / incidents within the first seven months of the year suggesting a possible end-year outcome of 62 crimes / incidents.

7.2. The majority of the hate crime / incidents are Racial related, although there have been a small number of hate crimes / incidents which fall in to Religious, Homophobic and Disability categories over the last three years.

7.3. Around 25% of all hate crimes / incidents are recorded to city centre locations with the other cases being evenly distributed throughout the city. There is little evidence of repeat victimisation for hate crime in York.

7.4. No new data is available on RTC's since the end of 2011. Road traffic Collision information is available for the whole 2011. The number of people killed or seriously injured in road traffic collisions in York has stayed static for the last three years after a decade of reduction.



**Report Written by:**

Ian Cunningham, Senior Analyst,  
 Tanya Lyon, Crime Reduction Manager,  
 Paul Morrison, Neighbourhood Safety Manager.